

MINISTAT

Swiss based Trafag is a leading international supplier of high quality sensors and monitoring instruments for the measurement of pressure and temperature.



Applications

- Railways
- Machine tools
- HVAC
- Refrigeration
- Process technology

Features

- Short response time
- Protection IP54
- Electrical connection on terminal screw

Technical Data

Designation of application	Remote sensing thermostat	Switching differential	Adjustable / not adjustable
Measuring range	-30°C ... +40°C to +70°C ... +350°C	Repeatability	± 0.5 % FS typ.
Output signal	Floating change-over contact	Approval / conformity	EN60730-1/ EN60730-2-9: Typ 2.B.H

11/2017

Data sheet H72172k

Subject to change

	XXX	XX	XX	XXX	XX	XXXXXXXXXX	XX	XX
Accessories	Switchpoint locking ⁴⁾							15
	Switchpoint fixed and sealed upon customer's request ⁴⁾							88
	Switchpoint preset upon customer's request, no guarantee on switching accuracy ⁴⁾							83
	Switchpoint adjustment please indicate when ordering:							
	- Switchpoint [°C]							
	- Increasing or decreasing							
	Condensator over Pin 1-2							12
	Condensator over Pin 1-3							13
	Condensators over Pin 1-2 / 1-3							23
	Railway version IEC 61373, category 2							28
	Outdoor application (vented)							44
	Cover with window							77
	Capillary tube protection: Flexible metal tube, brass nickel plated							90
	Capillary tube protection: Flexible metal tube 1.4541/V2A							91
Capillary tube protection: PVC tube							92	
Capillary tube length	Capillary tube length up to 5000 mm (no specification required for direct mounting on protection tube) L=XXXX ³⁾							

¹⁾ See data sheet H72114/H72163

²⁾ See data sheet H72106

³⁾ Overlengths upon request

⁴⁾ Only with type 634 internal adjustment

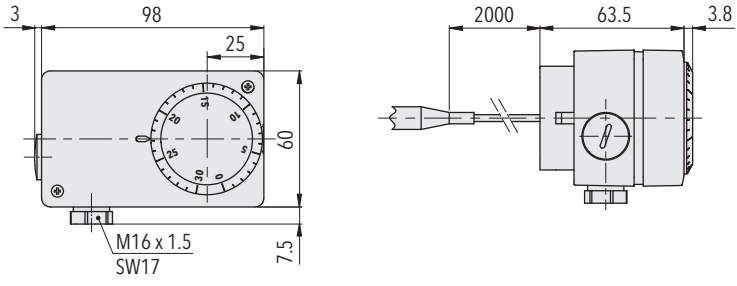
Standard products (extra short lead time)					
Product No.	Type Code	Sensor material	Temperature range [°C]	Switching differential [°C]	Sensor max. [°C]
M35	624 2509 422 19	Copper	0 ... +35	0.7 ... 10 (adjustable)	70
M40	624 2501 422 19	Copper	-30 ... +40	0.7 ... 10 (adjustable)	45
M95	624 2520 322 19	Copper	+5 ... +95	2 ... 12 (adjustable)	105
M150	624 2531 322 19	Copper	+20 ... +150	2.5 ... 16 (adjustable)	165
M230S	624 2524 121 19	1.4435/316L	+20 ... +230	3 ... 32 (adjustable)	250
M350S	624 2554 121 19	1.4435/316L	+70 ... +350	4 ... 40 (adjustable)	380
MS35	634 2509 422 19	Copper	0 ... +35	0.7 ... 10 (adjustable)	70
MS40	634 2501 422 19	Copper	-30 ... +40	0.7 ... 10 (adjustable)	45
MS95	634 2520 322 19	Copper	+5 ... +95	2 ... 12 (adjustable)	105
MS150	634 2531 322 19	Copper	+20 ... +150	2.5 ... 16 (adjustable)	165
MS230S	634 2524 121 19	1.4435/316L	+20 ... +230	3 ... 32 (adjustable)	250
MS350S	634 2554 121 19	1.4435/316L	+70 ... +350	4 ... 40 (adjustable)	380

Specifications		
Accuracy	Repeatability	$\pm 0.5 \% \text{ FS typ.}$
	Scale accuracy typ.	$\pm 2 \% \text{ FS typ.}$
	Switching differential	see table
	Switching point	Temperature compensated with bimetal switch lever
Environmental conditions	Ambient temperature	Range $\leq +45^{\circ}\text{C}$: $-30\dots+50^{\circ}\text{C}$ Range $+45\dots+250^{\circ}\text{C}$: $-30\dots+70^{\circ}\text{C}$ Range $> +250^{\circ}\text{C}$: $-10\dots+70^{\circ}\text{C}$ (Important: Temperature at sensor may not exceed maximum sensor temperature)
	Storage temperature	Range $\leq +45^{\circ}\text{C}$: $-30 \dots +50^{\circ}\text{C}$ Range $> +45^{\circ}\text{C}$: $-30 \dots +85^{\circ}\text{C}$
	Protection	IP54
	Humidity	Max. 95 % relative
Mechanical Data	Sensor housing	See ordering information
	Filling	Liquid
	Housing	PC/ABS-Blend V0
	Screwed cable gland	PA, Polyamid
	Installation	Any position
	Weight	$\sim 380 \text{ g}$
Microswitch	Rating	See table
	Resistance of insulation	$> 2 \text{ M}\Omega$
	Dielectric strength	$U \leq 250\text{V}$: 1.45 kV $U \leq 500\text{V}$: 2 kV terminal ground
	Life time (mechanical)	Microswitch 10/11/25: 20 Mio. cycles Microswitch 21: 0.5 Mio. cycles Microswitch 24: 0.3 Mio. cycles
Electrical connection	Cable gland	M16x1.5 Cable- \varnothing 4...9 mm
	Terminal screw	3 x 1...2.5 mm ²

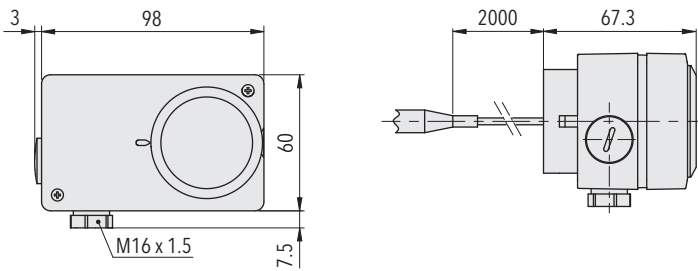
Additional information

Documents	Data sheet	www.trafag.com/H72172
	Instructions	www.trafag.com/H73624
	Flyer	www.trafag.com/H70954

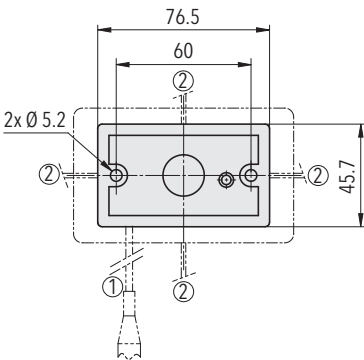
Dimensions



624.XXXX.XXX.XX...



634.XXXX.XXX.XX...



6X4.XXXX.XXX.19...

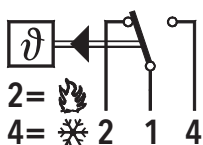
Switching differential typ.

Range	[°C]	-30 ... +40 -10 ... +25 0 ... +35 +15 ... +30 +10 ... +45 +10 ... +80	-10 ... +35 -10 ... +80 +5 ... +95 +20 ... +110	+20 ... +150	+20 ... +230	+40 ... +300 +70 ... +350
Microswitch 10 Switching differential (fixed value, not adjustable)	[°C]	0.3	0.8	1	1.2	2
Microswitch 11/21 Switching differential (fixed value, not adjustable)	[°C]	0.7	2	2.5	3	4
Microswitch 24 Switching differential (adjustable value)	[°C]	4 ... 21	5.5 ... 26	7 ... 34	15 ... 65	18 ... 84
Microswitch 25 Switching differential (adjustable value)	[°C]	0.7 ... 10	2 ... 12	2.5 ... 16	3 ... 32	4 ... 40

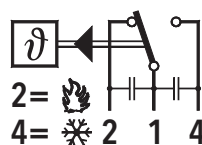
Electrical data switch

Type	Features	Rating Resistive Load (Inductive Load)	
		AC	DC
10	Small switching differential, not adjustable	125 V, 10 (1.5) A 250 V, 10 (1.25) A	250 V, 0.2 (0.02) A 125 V, 0.4 (0.03) A 30 V, 2 (1) A 14 V, 15 (2.5) A
11	Average switching differential, not adjustable	125 V, 15 (1.5) A 250 V, 15 (1.25) A 500 V, 10 (0.75) A	250 V, 0.25(0.03) A 125 V, 0.5(0.05) A 30 V, 6 (1.5) A 14 V, 15 (1.5) A
21	Gold plated contacts, not adjustable	24 V, 0.1(0.1) A 12 V, 1 (1) A 5 V, 2 (2) A	24 V, 0.1(0.1) A 12 V, 1 (1) A 5 V, 2 (2) A
25	Adjustable standard switching differential	125 V, 15 (1.5) A 250 V, 15 (1.25) A 500 V, 10 (0.75) A	250 V, 0.25(0.03) A 125 V, 0.5(0.05) A 30 V, 6 (1.5) A 14 V, 15 (2.5) A
24	Adjustable large switching differential	125 V, 15 (1.5) A 250 V, 15 (1.25) A 500 V, 10 (0.75) A	250 V, 0.3 (0.2) A 125 V, 0.75 (0.4) A 30 V, 15 (1.5) A 14 V, 15 (1.5) A

Electrical Connection



624/634



with accessory 23