

Actuator

LD10

LD10 features inline design which makes it an ideal product to fulfill the needs of application with limited installation space.

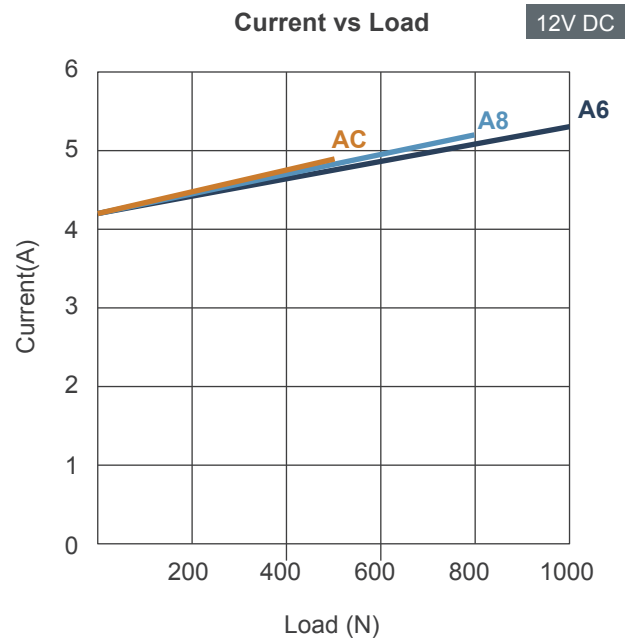
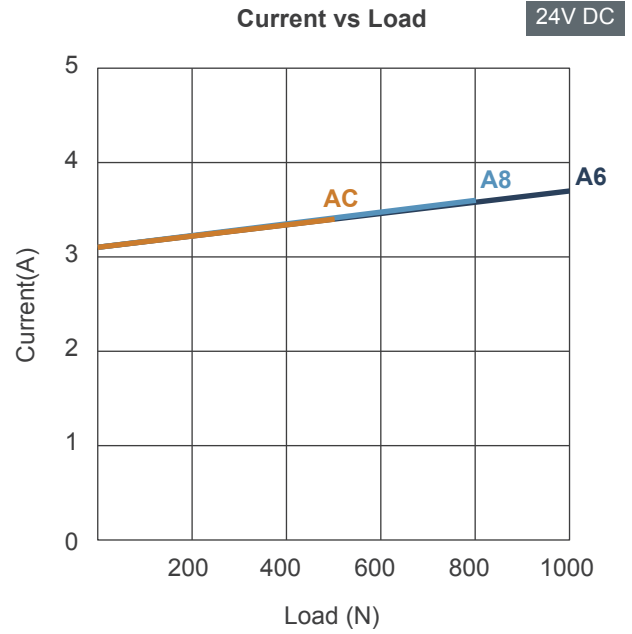
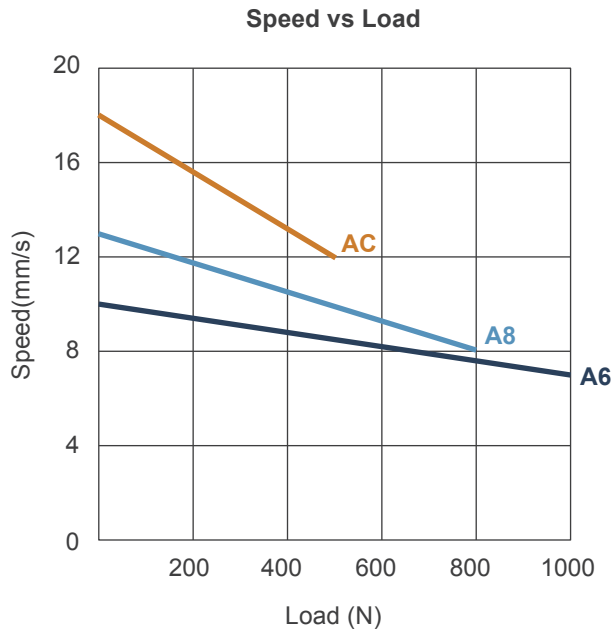


Feature

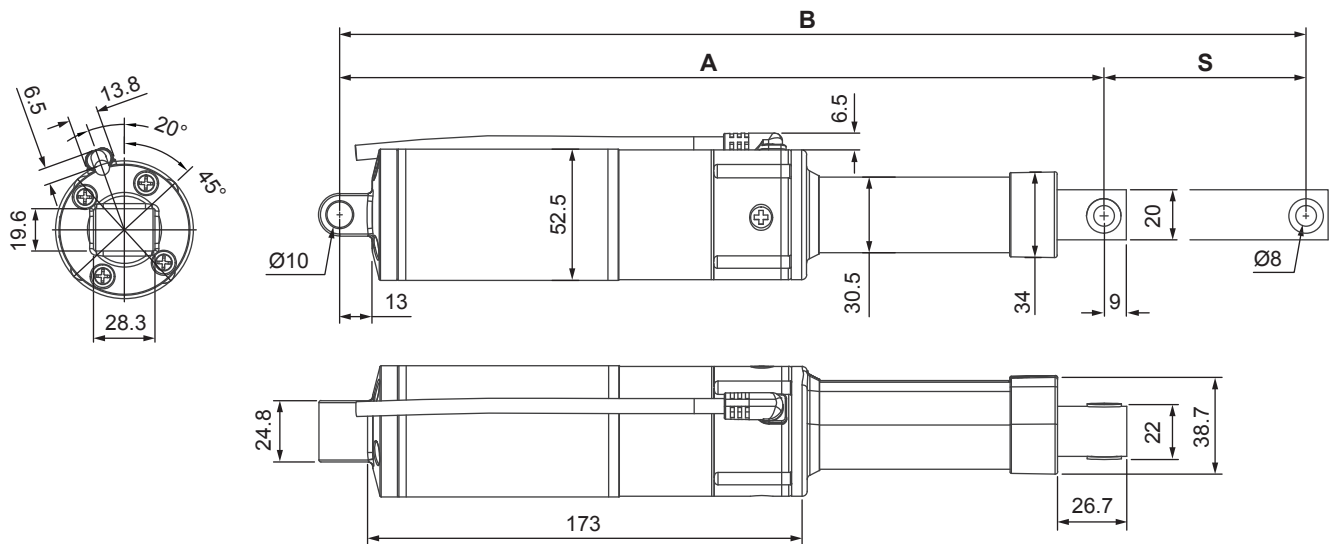
- Main applications: Industrial automation
- Input voltage: 24V DC / 12V DC
- Max. load: 1000N (push / pull)
- Max. speed at no load: 18 mm/sec
- Max. speed at full load: 7 mm/sec @ 1000N
- Stroke: 50 ~ 300 mm
- Noise level: ≤ 65 dB
- IP Protection level: IPX4
- Color: Black
- Preset limit switches
- Duty cycle: 10%, max. 2 min. continuous operation in 18 min.
- Ambient operation temperature: $-20^{\circ}\text{C} \sim +65^{\circ}\text{C}$
- Certified: CE Marking, EMC Directive 2014/30/EU and 2004/108/EC

Performance Data

Model No.	Gear ratio	Push / Pull Max. (N)	Typical Speed (mm/s)		Typical Current (A)			
			No load	Full load	No load		Full load	
					12V	24V	12V	24V
LD10-XX- A6 -16-XXX.XXX-CXX	16:1	1000	10	7	4.2	3.1	5.3	3.7
LD10-XX- A8 -16-XXX.XXX-CXX	16:1	800	13	8	4.2	3.1	5.2	3.6
LD10-XX- AC -16-XXX.XXX-CXX	16:1	500	18	12	4.2	3.1	4.9	3.4



Dimensions



Installation Dimension

Front connector code	Retracted length (A)
3, 4	$A \geq S + 256 \text{ mm } (\pm 3\text{mm})$
1, A	$A \geq S + 265 \text{ mm } (\pm 3\text{mm})$
9	$A \geq S + 282 \text{ mm } (\pm 3\text{mm})$

Available stroke (S) range = 50 ~ 300 mm

Extended length (B) = S + A

Front connector

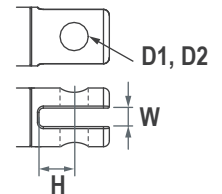
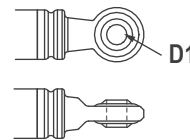
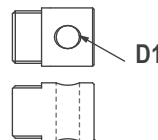
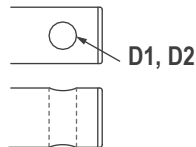
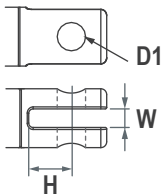
1: Plastic slot

3: Drilled hole

4: Plastic solid

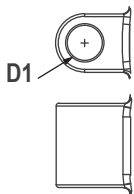
9: Spherical rod eye

A: Metal slot



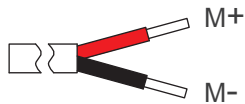
Rear connector

6: Plastic



Front connector code	Diameter of pivot without bushing (D1)	Diameter of pivot with plastic bushing (D2)	Slot width (W)	Slot depth (H)
1	Ø8, Ø10	N/A	6	15
3	Ø6.4, Ø8, Ø10	Ø8	N/A	N/A
4	Ø8, Ø10	N/A	N/A	N/A
9	Ø8	N/A	N/A	N/A
A	Ø8, Ø10	Ø8	6	13.5
Rear connector code				
6	Ø10	N/A	N/A	N/A

Wiring



Note:

Connect (M+) to “+” & (M-) to “-“ of DC power, the actuator will extend.

Ordering Key

LD10 - 24 - A6 - 16 - 356 - 456 - C 3 6

Input voltage	12: 12V DC 24: 24V DC
Motor and Spindle type	A6 A8 AC (Refer to Performance Data)
Gear ratio	16: 16:1
Retracted length	XXX (Refer to Dimensions)
Extended length	XXX (Refer to Dimensions)
Front connector	1: Plastic slot 3: Drilled hole 4: Plastic solid 9: Spherical rod eye A: Metal slot (Refer to Dimensions)
Rear connector	6: Plastic (Refer to Dimensions)

Terms of Use

The user is responsible for application suitability of Moteck products. As ongoing improvement process continues, products listed on the Moteck website are subject to change without prior notice. Moteck reserves the right to terminate the sales or remove any product displayed on the website, or listed in its catalogues.